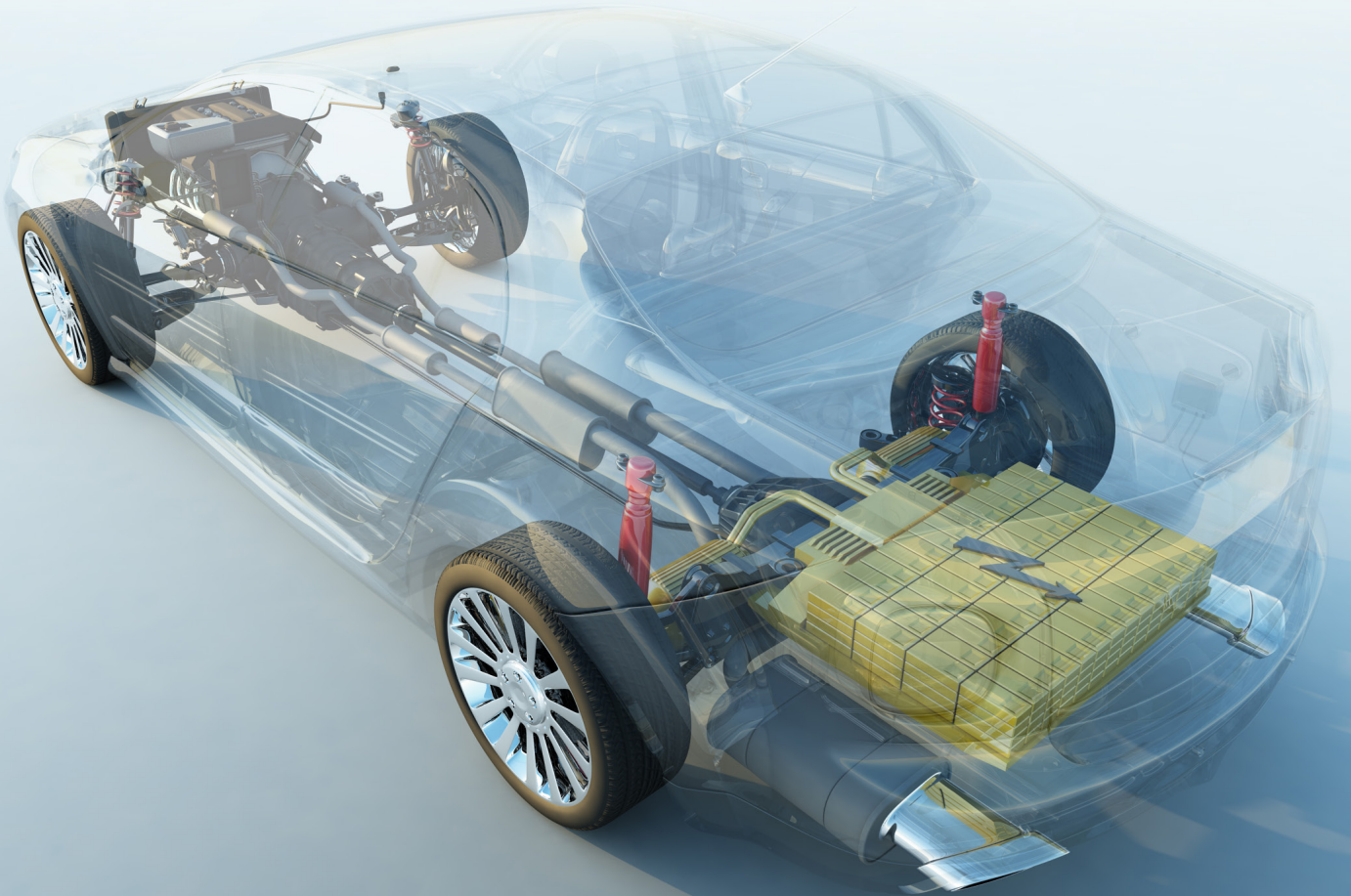




# ANCHOR HARVEY

ELECTRIC VEHICLE WORKGROUP



# FORGE FORWARD

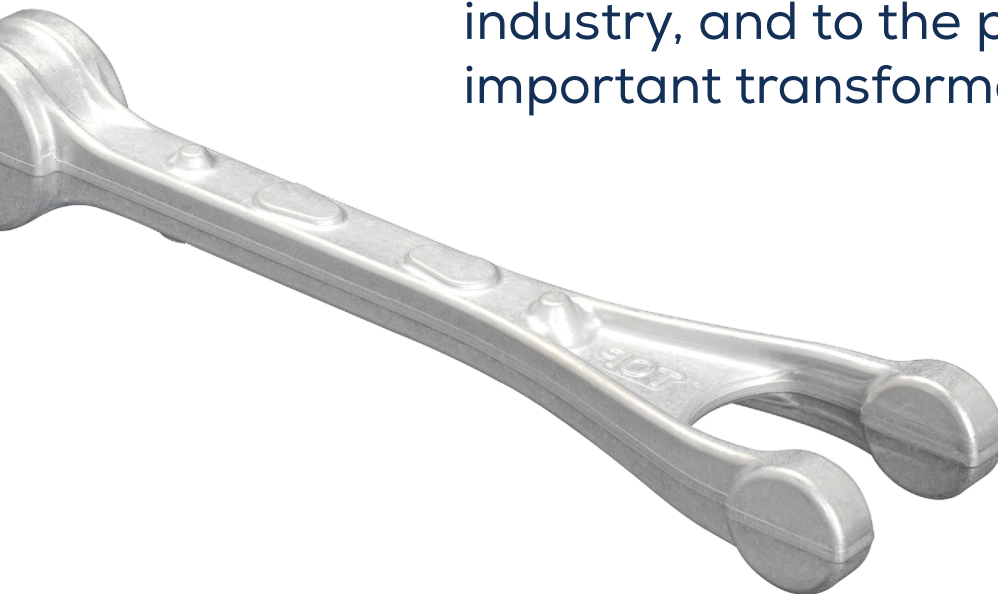
# FORGING AN ALL-ELECTRIC FUTURE

Anchor Harvey is creating a better tomorrow with our commitment to forging high-strength, lightweight components for electric vehicles. The EV Workgroup at Anchor Harvey is at the core of creating value for our customers as we work to deliver the most efficient parts for the next generation of transportation.

For 100 years, Anchor Harvey has helped the transportation industry forge ahead. Working in partnership with niche producers and name brand OEMs, we have pushed the boundaries of vehicle technology, manufacturing, and performance to new levels. Our EV Workgroup works with clients to produce components for electric transportation of every style and price point as we accelerate toward a future in which all vehicles are zero-emission vehicles.

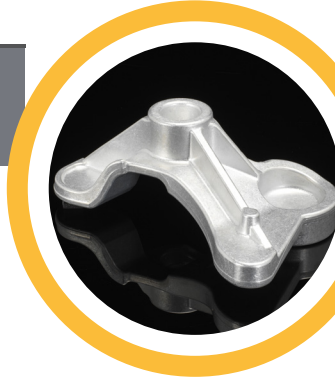


This is the time for evolution; the time for innovation. Anchor Harvey is dedicated to the advancement of the transportation industry, and to the part we play in this important transformation.”



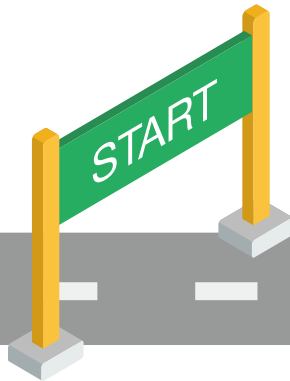
# ELECTRIC VEHICLE ROADMAP TO SUCCESS

Staying ahead of the rapidly changing automotive industry requires an understanding of where it's going. The EV Workgroup at Anchor Harvey has the technology, systems, and expertise to create the forged components that will drive tomorrow. From driveshafts, battery boxes, yokes, and motor housings, to suspension components, hubs, shocks, and more, Anchor Harvey's forged aluminum components help electric vehicles drive longer, safer, and cleaner.



## START AT ANCHOR HARVEY

Advanced logistics, process monitoring technology, and an entirely domestic supply chain, enable Anchor Harvey to provide partners with new tool and product lead times that are 3-4 times faster than the industry average.



PRODUCT LEAD TIMES  
**3-4 X FASTER**  
than the industry average

EQUIPMENT  
UPTIME  
near  
**100%**





# DISCOVER THE BENEFITS OF FORGED ALUMINUM FOR ELECTRIC VEHICLES

Anchor Harvey's high-strength and lightweight forged aluminum components are ideal for electric vehicles. Our commitments to quality, craftsmanship, and precision engineering are why transportation manufacturers nationwide and around the world choose Anchor Harvey.

## FORGING vs CASTING

- Stronger Components
- No Porosity
- Better Surface Finish

## ALUMINUM vs STEEL

- Reduced Weight
- 1/3 Density
- Equal Strength

## FORGING vs BILLET

- 40% Reduced Machine Time
- Eliminate Roughing Program

## FORGING vs EXTRUDING

- Increased Strength
- Nearer Net Shape
- Reduce Machining
- Retains More Details



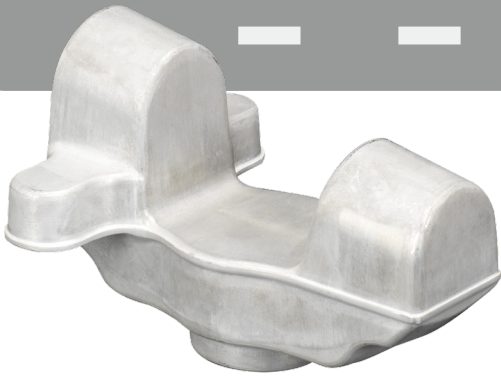
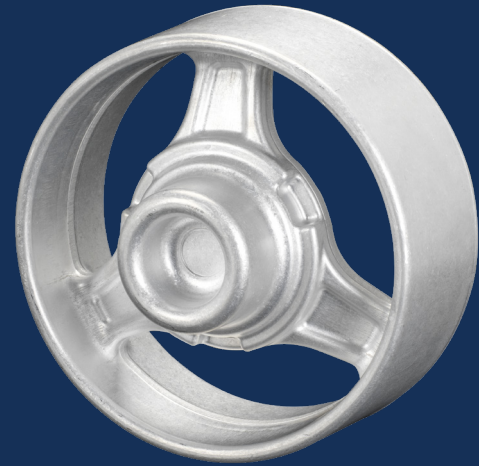
## MOVE WITH US

EV fleet manufacturers require electric buses and trucks capable of hauling up a hill or running at highway speeds when fully loaded. High-strength lightweight forged aluminum components from Anchor Harvey set the bar for the industry, enabling commercial electric vehicle designers to maximize strength, minimize weight, and increase range with improved performance. As commercial fleets go electric, whether hauling freight or transporting people, Anchor Harvey is here to forge precision components today for tomorrow's heavy-duty EVs.



# AT THE INTERSECTION OF EXPERTISE AND TECHNOLOGY

As a data-driven aluminum forging company, Anchor Harvey has a strong legacy of precision manufacturing, engineering, and supply chain management. We've modernized the age-old aluminum forging process by introducing state-of-the-art technology and advanced workflows to control operations. Through our EV Workgroup, we are working with electric vehicle manufacturers to transform the transportation industry and deliver the next-generation of components.



## RIDE WITH US

Instantaneous power delivery and Anchor Harvey's lightweight forged aluminum components deliver racing-grade performance on two wheels as well as four. As one of the USA's premier manufacturers of motorcycle parts for performance and recreational vehicles, we provide capabilities, assets, and a legacy unmatched by any competitor. Anchor Harvey has the technology, expertise, and components that move the industry forward from battery-assisted bicycles that amplify pedaling power to electric motorcycles built for the open highway.



# TAKE THE ANCHOR HARVEY WAY

The Anchor Harvey Way is constructed on three core principles: consistency, efficiency, and expertise. It's the force that drives us as we accelerate manufacturing innovation, moving the next-generation of electric vehicle technology out of the laboratory and into production. The Anchor Harvey Way is the pathway to pushing open new frontiers and achieving breakthrough performance.



## CONSISTENCY BY PROCESS CONTROL

Advanced process controls ensure consistent products from batches of 1 to 1,000,000 and beyond. Industry-leading data acquisition systems, preventative and predictive maintenance, and data monitoring all work together to create components built for the next generation of transportation.



## UNMATCHED EFFICIENCY

The future is arriving faster than ever. Advancements and innovations in electric vehicles require efficient, modern workflows that exceed expectations today, are prepared for tomorrow, and can handle whatever comes next. Our Cellular Manufacturing Forge Process turns five steps — sawing, hot forging, polishing, trimming, and inspecting — into one continuous workflow to deliver unmatched cost efficiencies, speed-to-market, and adaptability.



## TRUSTED MANUFACTURING EXPERTISE

At Anchor Harvey, partnership means working towards the shared mission of building better products together. With our EV Workgroup, Anchor Harvey is dedicated to establishing a truly personal experience for our electric vehicle customers. We're masters of manufacturing with 100 years of experience and proven expertise.

## FLY WITH US

Anchor Harvey is laying the groundwork for zero-emission aviation. Electric and hybrid propulsion is rapidly revolutionizing the transportation industry, and aviation is no exception. From autonomous delivery drones to battery-powered commercial aircraft and electric urban air vehicles, our forged aluminum components help ensure safe flights today as well as the tomorrow we're proud to be part of creating. Our work in electric aviation aims to lay the foundation for the future as the next generation of EV aircraft take flight.





# WIN THE RACE TO THE FUTURE

The next generation of transportation relies on manufacturing incredible components that empower extraordinary experiences. Electric vehicles are the first step to a better, faster, and cleaner world. A world set to be defined by performance, technology, and efficiency — the world of Anchor Harvey.

Anchor Harvey is forging ahead into an exciting future powered by exciting innovations and new opportunities. We're dedicated to reducing weight and increasing range in EVs by creating components that are amazingly light and incredibly strong. From start to finish, every aspect of our forging workflow is designed to deliver electric vehicle components where top-quality and high-performance are more than just attainable, they're sustainable.



Connect with your field engineer at [ForgeMyPart@AnchorHarvey.com](mailto:ForgeMyPart@AnchorHarvey.com)

[AnchorHarvey.com](http://AnchorHarvey.com) | 1.888.FORGING (367-4464) | 600 West Lamm Road, Freeport, IL 61032 USA

IT'S NOT WHAT WE MAKE. IT'S WHAT WE MAKE POSSIBLE.